



SCIENCE

CLICK & JOIN



IMPORTANT DIAGRAMS

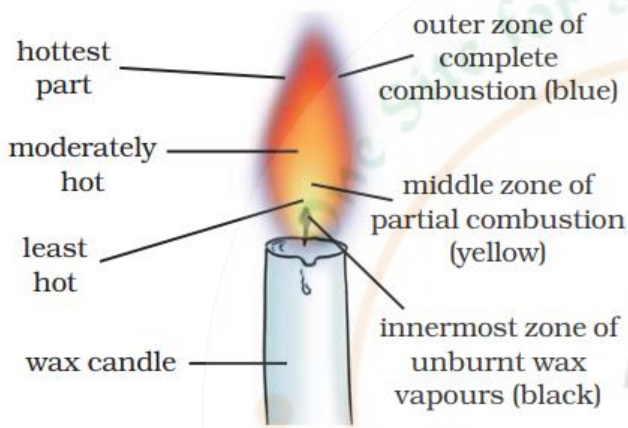


Fig. 10.13 : Different zones of candle flame

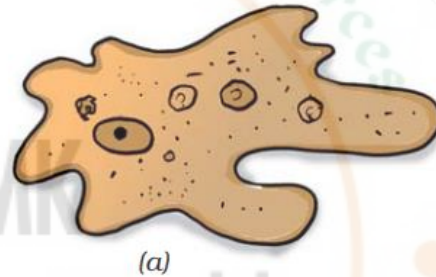


Fig. 11.3 : (a) Amoeba (b) Paramecium

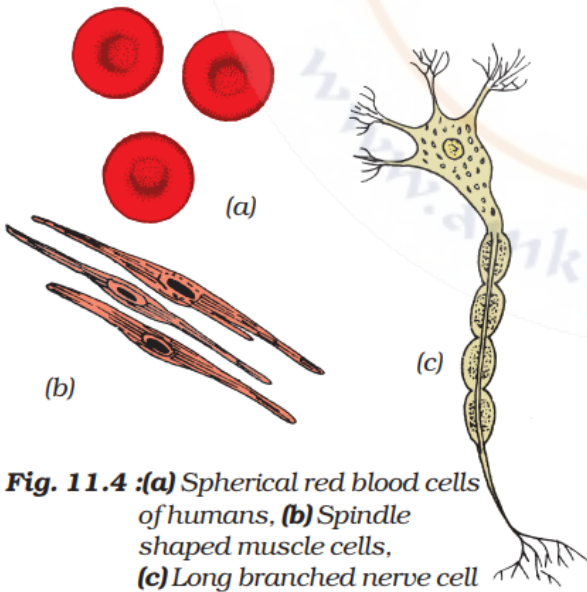


Fig. 11.4 : (a) Spherical red blood cells of humans, (b) Spindle shaped muscle cells, (c) Long branched nerve cell

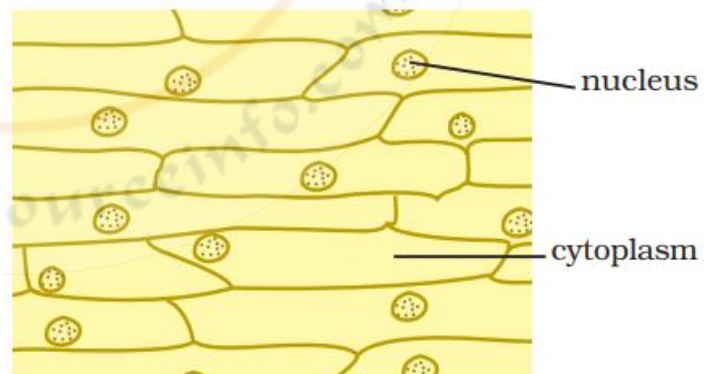


Fig. 11.5 : Cells observed in an onion peel

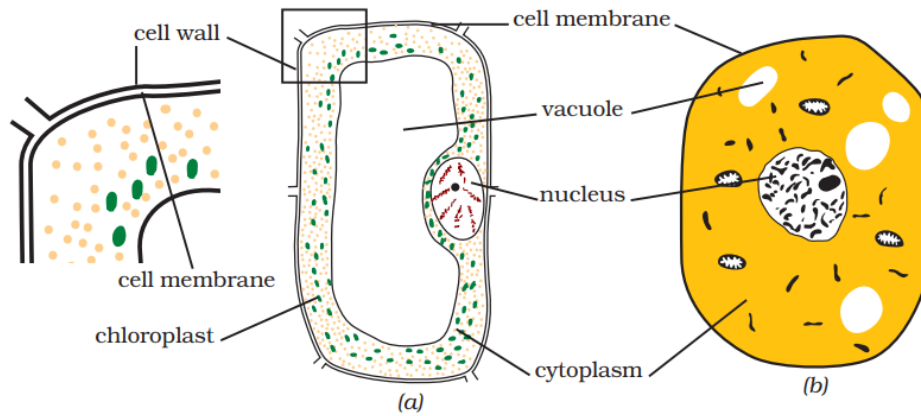


Fig. 11.7 : (a) Plant cell (b) Animal cell

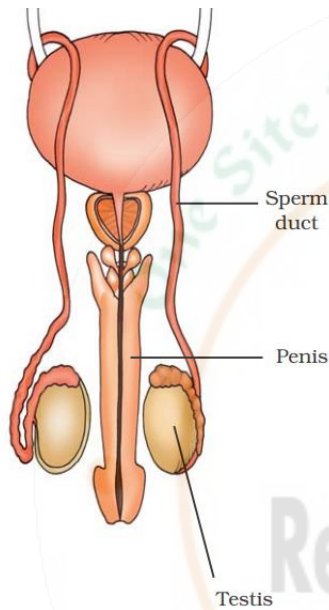


Fig. 12.1: Male reproductive organs in humans

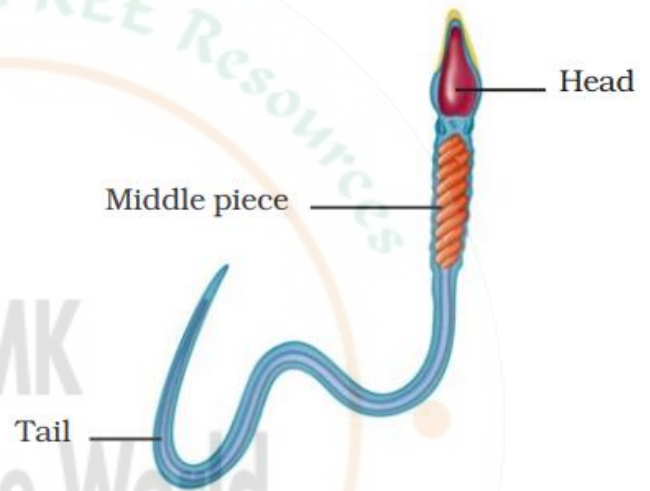


Fig. 12.2 : Human sperm

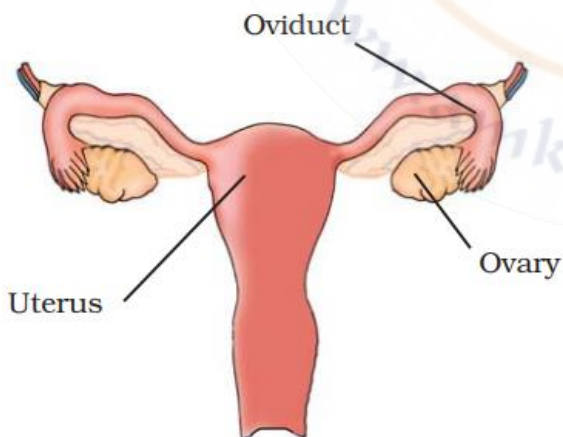


Fig. 12.3 : Female reproductive organs in humans

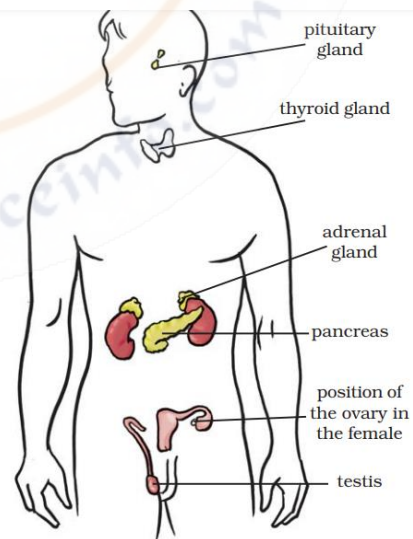


Fig. 13.5 : Position of endocrine glands in the human body

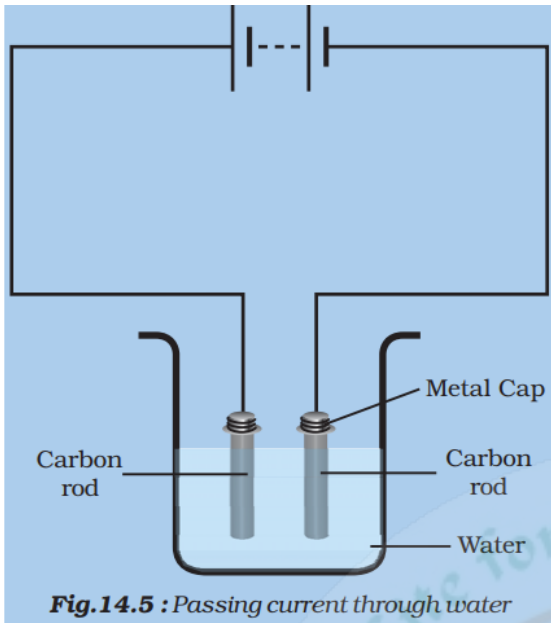


Fig.14.5 : Passing current through water

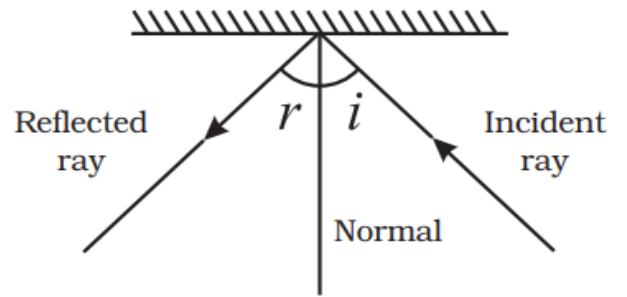


Fig. 16.3 : Angle of incidence and angle of reflection

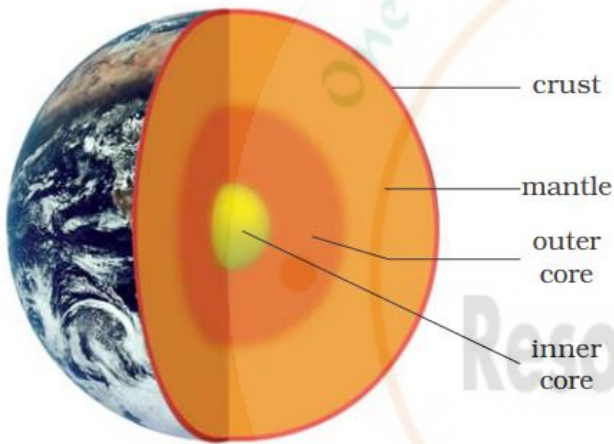


Fig. 15.9 : Structure of the earth

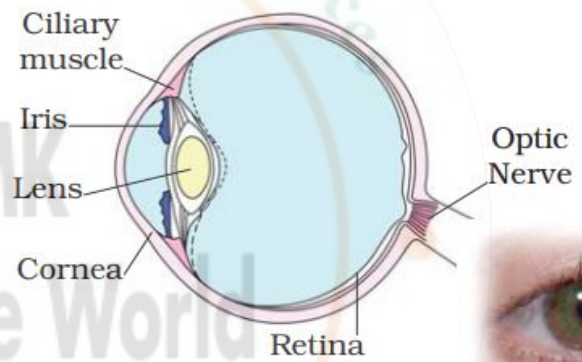


Fig. 16.14 : Human eye



CLICK & JOIN

