

## Shikaripur Taluk level preparatory exam 2021

class- 10

Subject : science

Time: 1 hour

1. Among the following which one is used to cure acidity in stomach
  - a. life saving drug
  - b. Pain killer
  - c. antacids
  - d. Antitoxic
2. The reaction when an acid reacts with base and produces water and salt is called as.
  - a. Neutralization
  - b. decomposition
  - c. Corrosion
  - d. displacement
3. Gas liberated when Zinc granules reacted with hydrochloric acid is
  - a. Nitrogen
  - b. Carbon di oxide
  - c. Hydrogen
  - d. Oxygen
4. composition of an alloy Solder
  - a. Fe + Ni + Cr
  - b. Cu + Zn
  - c. Pb + Sn
  - d. Cu + Sn
5. Among the following is an amphoteric oxide is
  - a. MgO & CaO
  - b. ZnO & Al<sub>2</sub>O<sub>3</sub>
  - c. CaO & SO<sub>2</sub>
  - d. CO & Na<sub>2</sub>O
6. Which of the following is the appropriate method to prevent corrosion of an iron pan
  - a. greasing
  - b. painting
  - c. Galvanization
  - d. All the above

7. Which of the following represents arrangement of Reactivity series in ascending order

- a.  $Mg > Fe > Zn > Al$
- b.  $Mg > Zn > Al > Fe$
- c.  $Mg > Al > Zn > Fe$
- d.  $Al > Zn > Fe > Mg$

8. . Tissue which helps in food transportation in angiosperms

- a. xylem
- b. phloem
- c. parenchyma
- d. sieve tubes

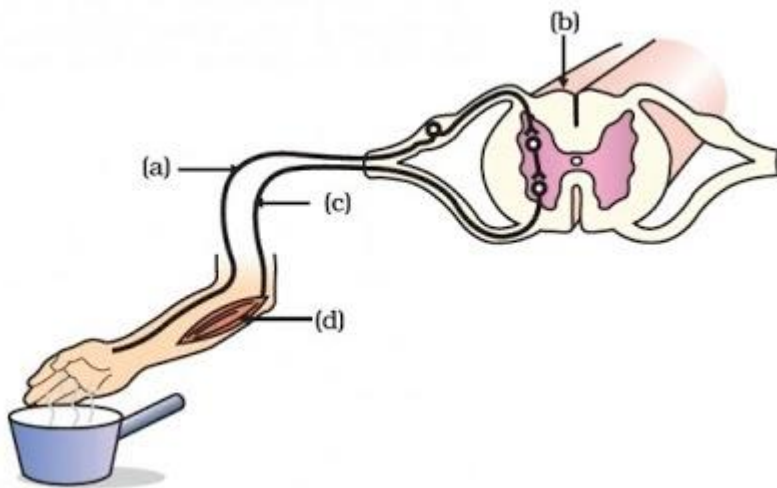
9. In plants method is used for excretion

- a. guttation
- b. shedding of leaves
- c. in the form of resin and glue
- d. all the three are correct

10. The center of intelligence in the human brain is

- a. Fore brain
- b. The Mid-Brain
- c. Hind brain
- d. hypothalamus

11. Observe the figure and identify the parts



1. A) Sensory neuron b) spinal cord c) motor neuron d) effectors  
2. A) motor neuron b) spinal cord c) Sensory neuron d) effectors  
3. A) Receptors b) effectors c) sensory neuron d) spinal cord  
4. A) Receptors b) relay neuron c) sensory neuron d) effectors

12. A hormone that stimulates cells in the stem to grow longer which are apart of the light

- a. cytokinin
- b. auxin
- c. ethylene
- d. abscisic acid

13. If the length of the resistor increases the resistance become

- a. Increases
- b. decreases
- c. No changes
- d. becomes zero

14. One of the following electric appliances does not obey heating effect of

- a. fuse
- b. bulb
- c. electric iron box
- d. refrigerator

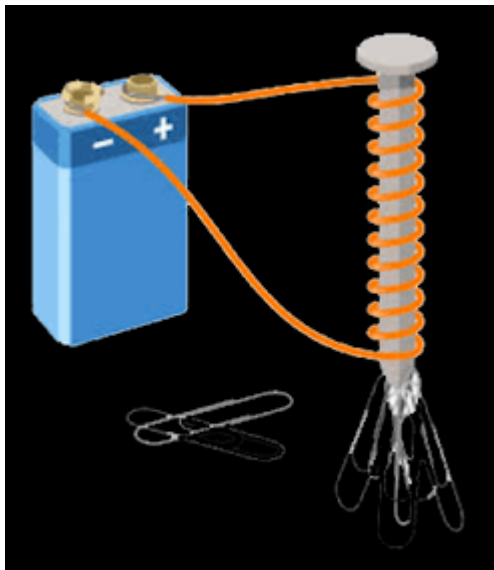
15. A Wire that prevents damage from electrical leaks

- a. load
- b. neutral
- c. mains
- d. earthing wire

16. As we move away from the conductor of electricity, the magnitude of the magnetic field

- a. increases
- b. decreases
- c. no changes
- d. increases in progressions

17. An electro-magnet that acts as a bar magnet in the fig is



- A. A straight conductor with electric current
- B. A soft iron kept in the solenoid
- C. A circular coil with current flowing through it
- D. A long conductor with current flowing through it

18. When the magnetic field changes to the respective conductor, the current in the conductor is induced" stated as

- A. motor rule
- B. electro chemical effect
- C. electro magnetic induction
- D. Flemings left hand rule

19. What will be your opinion for the solid waste management at your school

- A. Avoid using use and throw pens
- B. Avoid using plastic bottles
- C. Books are to be wrapped with paper
- D. All the above

20. Substances that emit chlorofluorocarbons which are responsible for ozone layer destruction

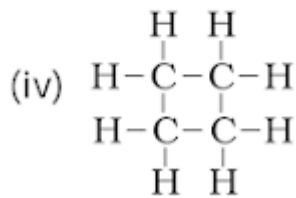
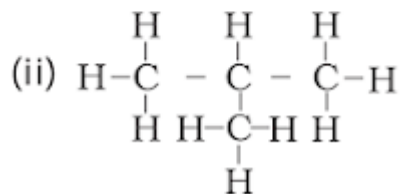
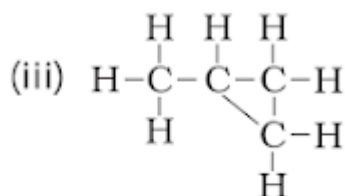
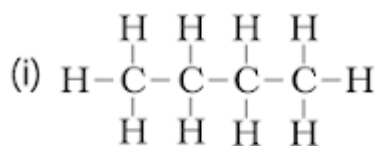
i. Refrigerators ii) deep freezers iii) some fire extinguishers .

- a) i only
- b) i & ii
- c) ii & iii
- d) I , ii & iii

21. Measures to reduce the destruction of the ozone layer

- a) Use of environmentally friendly refrigerators
- b) Reducing the use of CFCs in aerosols and CFCs
- c) Non-utilization of CFC-generators
- d) all of the above

22. Among these the isomer of butane are



- (a) (i) and (iv)
- (b) (ii) and (iv)
- (c) (i) and (ii)
- (d) (iii) and (iv)

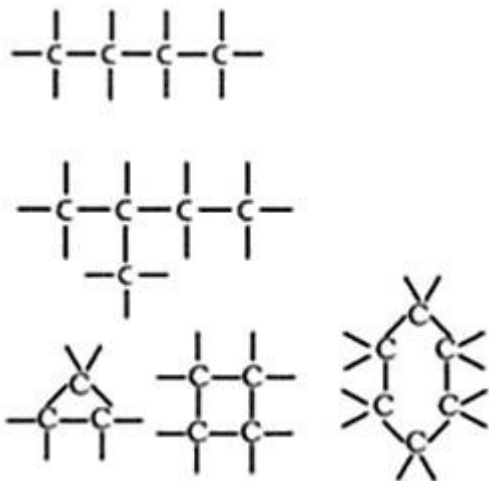
23. Class of compound having functional group — OH

- (a) Butaneone
- (b) Butanol
- (c) Butenoic acid
- (d) Butenylal

24. Among these is not related to homologous series

- (a) CH<sub>4</sub>
- (b) C<sub>2</sub> H<sub>6</sub>
- (c) C<sub>3</sub> H<sub>8</sub>
- (d) C<sub>4</sub> H<sub>8</sub>

25. Carbon has the unique ability to form bonds with other atoms of carbon, giving rise to large molecules. This property is called



- (a) Esterification
- (b) catenation
- (c) isomerism
- (d) hydrogenation

26. arithmetic mean of the atomic masses of first and the third element in the **triad** should be equal to or at least almost equal to the atomic mass of the second element that is present in the **triad**. This law is represented by

- a. Newlands
- b. Dobereiner
- c. Mosley
- d. Mendeleev

27. According to modern periodic table the properties of the elements are of their periodic properties of

- a. mass
- b. atomic mass
- c. atomic number
- d. atomic size

28. In the modern periodic table as we move left to right the atomic size will become

- a. decreases
- b. increases
- c. remains same
- d. equals to the level

29. These following parts belongs to Pistil of a flower

- a) Stigma ,Style and Anther
- b) Stigma Style and Ovary
- c) Anther, Filament, Ovary
- d) Stigma, Style and Ovary

30. Reasons for adopting contraceptive methods.

- a) To maintain sexual hygiene
- b) To prevent conception
- c) To avoid sexual diseases
- d) All the above

31. In the Independent inheritance of two separate traits, F<sub>2</sub> ration is as follows

- A. 3:4:5:6
- B. 3:2:2:8
- C. 9:3:3:1
- D. 3:1

32. The gender of a child will be determined by

- a) Chromosome of an ovary
- b) X chromosome from mother
- c) Chromosome of Both father and mother
- d) Chromosome of a sperm

33. Our shoulder resembles the followings in terms of homologous organs

- a) Fins of fishes
- b) Arms of octopus



c) Wings of butterfly

d) Fins of Penguins

34. .When we keep an object at  $2F_1$  in an convex lens , position and nature of the image will be as follows

a) In  $2F_2$ , the smallest size, is a real image

b) At  $2F_2$ , the larger the size, the virtual image

c) At  $2F_2$ , equal size, virtual reflection

d) In  $2F_2$ , equal size, real reflection

35. Where should be object placed to obtained an image from the convex lens as same size of the object

a) at infinity

b) beyond  $2F_1$

c) at  $2F_1$

d) in between  $F_1$  and  $2F_1$

36. The centre of lens is called

a. Centre of curvature

b. Optical centre

c. Lens axis

d. Principle focus

37. What is the reason for the Inner wall of solar cookers are painted with black ?

a) To absorb more heat

b) To reflect light

c) To avoid corrosions

d) For converging rays of light

38. The following is a good charecterisitic of a fuel

a) should be readily available

b) Must be able to store and transport easily

c) Must be economical, and should work more for unit volume

d) All of the above

39. By building khaddin embankments on flat terrain

- a) Groundwater level decreases
- b) Groundwater level Increases
- c) Plants in the vicinity are dampened by excess moisture.
- d) Groundwater is polluted.

40. The main aim of Ganga Action plan is

- a) Disinfecting of Ganga River from the pollution
- b) Construction of a new dam for the river.
- c) Using water for irrigation
- d) Increasing the production of water and other aquatic animals

\*\*\*\*\*