

Danish Sir's Practice Papers

SSLC MCQ PRACTICE PAPER (July – 2021 Exam)

Sub: Maths, Science, Social (40 Marks Each)

Code no. 2106-16



Time: 2 Hour

Total Marks: 120

MATHEMATICS

- The roots of an equation are +5 and -5. Then the equation is
 (a) Adfected E (b) Linear equation
 (c) pure Q.E (d) Simple Linear equation
- If the common difference of an AP is 3, then $a_{20} - a_{15}$ is
 (a) 5 (b) 3
 (c) 15 (d) 20
- If the lines drawn to the linear equations of the type $a_1 x + b_1 y + c_1 = 0$ and $a_2 x + b_2 y + c_2 = 0$ are coincident on each other, correct relation among the following is
 (a) $\frac{a_1}{a_2} = \frac{b_1}{b_2} = \frac{c_1}{c_2}$ (b) $\frac{a_1}{a_2} \neq \frac{b_1}{b_2} \neq \frac{c_1}{c_2}$
 (c) $\frac{a_1}{a_2} = \frac{b_1}{b_2} \neq \frac{c_1}{c_2}$ (d) $\frac{a_1}{a_2} \neq \frac{b_1}{b_2} = \frac{c_1}{c_2}$
- A solid sphere of radius x cm is melted and cast into a shape of a solid cone of radius x cm. Then the height of the cone is :
 (a) 3x cm (b) x cm
 (c) 4 x cm (d) 2 x cm
- If the area of a circle is 49π sq. units then its perimeter is
 (a) 7π units (b) 9π units
 (c) 14π units (d) 49π units
- The missing term in the following AP is 2,7,

 17.....
 (a) 12 (b) 10
 (c) 9 (d) 8

- In figure, QR is a common tangent to the given circles, touching externally at the point T. The tangent at T meets QR at P. If PT = 3.8 cm, then the length of QR (in cm) is [2014]
 (a) 3.8 (b) 7.6
 (c) 5.7 (d) 1.9
- If the point p (x, y) is equidistant from A(5,1) and B (-1,5), then
 (a) 5x-y (b) X=5y
 (c) 3x=- 2y (d) 3x=2y
- The pair of equations $2x+y=5, 3x+2y=8$ has
 (a) Unique solution (b) Two solutions
 (c) No solutions (d) Infinitely many solutions
- The point of co-ordinates satisfying $2x+y=6$ is
 (a) 1,1 (b) 3,0
 (c) 3,3 (d) 4,4
- In $\triangle ABC$ if $B^2 - B C^2 = A C^2$, then the right angled vertex and the hypotenus are
 (a) <A and AB (b) <B and AB
 (c) <C and AB (d) <DC and AC
- The sum of the roots of the equation $k^2 - 9 - 5k$ is
 (a) 5. (b) $\frac{9}{5}$
 (c) $-\frac{9}{5}$ (d) -5
- A vertical pole of 10m casts a shadow of 8m at certain time of the day. The length of shadow cast by a tower standing next to the pole of height 110m is
 (a) 80m (b) 18m
 (c) 88m (d) 100m



b-fet CRESCENT ITI (GOVT.AIDED) Fees Rs. 2,400/- only for Govt. Quota Seats

★ # 5, Near Metro Piller 58, Ilyasnagar, Sarakki Gate, Kanakapura Main Road, Bangalore-560 078.
 ★ Jigani Link Road, Near SFO, KIADB, Bommasandra, 4th Phase, Bangalore-560 099.

Ph: 92424 84476
 94482 26652



14. The pair of linear equations $7x - 3y = 4$ and $14x + 4y = 5$ have

- (a) One solution (b) Two solution
(c) Many solution (d) No solution

15. 3 circles with centres A, B and C touch each other externally. If the radii of these circles are 6 cm, 5 cm and 4 cm then the perimeter of $\triangle ABC$ is

- (a) 15 cm (b) 12 cm
(c) 6 cm (d) 30 cm

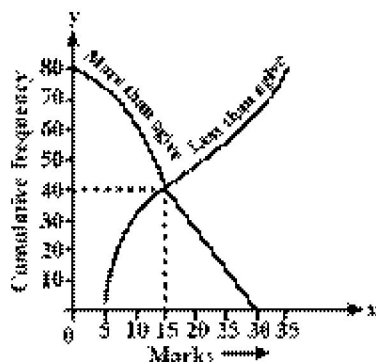
16. If 'm' and 'n' are the roots of the equation of $x^2 - 6x + 2 = 0$ then the value of $m^{2n} + mn^2$ is

- (a) 6 (b) 2
(c) 12 (d) 3

17. The nature of roots $x^2 + 5x - 6 = 0$ is

- (a) Real & distinct (b) Equal & real
(c) Non-real (d) Imaginary

18. In figure 1 the value of the median of the data using the graph of less than ogive is more than



- (a) 5 (b) 40
(c) 80 (d) 15

19. If the n th term of an arithmetic progression is $4n^2 - 1$, then the 8th term is

- (a) 32 (b) 31
(c) 256 (d) 255

20. The pair of linear equations $2x + 3y - 9 = 0$ and $4x + 6y - 18 = 0$ represents two lines which are

- (a) Intersecting lines (b) Parallel lines
(c) Perpendicular to each other (d) Coinciding lines

21. If the common difference of an A.P. is -6 then $a_{16} - a_{12}$ is

- (a) 24 (b) 42
(c) 30 (d) -24

22. The number of solutions of the pair of linear equations $x + 2y - 8 = 0$ and $2x + 4y = 16$ have

- (a) 0 (b) 1
(c) Infinitely many (d) None

23. The sum of an arithmetic series with 15 terms is 180. Then the 8th term is

- (a) 8 (b) 12
(c) 15 (d) 18

24. The number of solid spheres, each of diameter 6 cm that can be made by melting a solid metal cylinder of height 45 cm and diameter 4 cm is

[2014

- (a) 3 (b) 5
(c) 4 (d) 6

25. If the n th term of an arithmetic progression $a_n = 24 - 3n$, then its 2nd term is

- (a) 18 (b) 15
(c) 0 (d) 2

26. If the first term and the common differences of an A.P. are 6 and 5 respectively, find its 3rd term.

- (a) 12 (b) 22
(c) 36 (d) 16

27. A person continuously places 3 marbles in first box, 5 in second box, 7 in third box etc. The number of marbles that he places in sixteenth box is

- (a) 66 (b) 35
(c) 13 (d) 33

28. The mean and median of a data are 14 and 15 respectively. The value of mode is

- (a) 16 (b) 17
(c) 13 (d) 18

29. The ratio of the length of a rod and its shadow is $1 : \sqrt{3}$. Then the angle of elevation of the sun is :

- (a) 30° (b) 45°
(c) 60° (d) 90°



b-fet CRESCENT ITI (GOVT.AIDED)

Fees Rs. 2,400/- only for Govt. Quota Seats

5, Near Metro Pillar 58, Ilyasnagar, Sarakki Gate, Kanakapura Main Road, Bangalore-560 078.
Jigani Link Road, Near SFO, KIADB, Bommasandra, 4th Phase, Bangalore-560 099.

**Ph: 92424 84476
94482 26652**



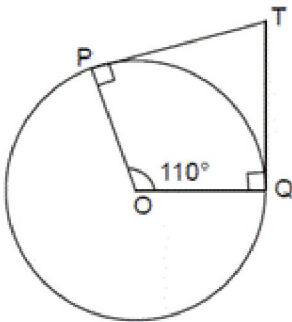
30. If the equation $km^2 + 3m = -k$ is zero then K is equal to

- (a) 1 (b) 2
(c) 3 (d) 0

31. Find the value of $\sin 30^\circ + \cos 60^\circ$

- (a) 2 (b) 4
(c) 1 (d) 3

32. If TP and TQ are two tangents to a circle with Centre 'O' such that $\angle POQ = 110^\circ$, then $\angle PTQ$ is equal to _____



- (a) 60° (b) 70°
(c) 90° (d) 80°

33. A straight line which passes through two points on a circle is

- (a) A chord (b) A secant
(c) A tangent (d) The radius

34. For a symmetrical distribution, which is correct

- (a) Mean > Mode > Median (b) Mean < Mode < Median
(c) Mode = $\frac{\text{Mean} + \text{Median}}{2}$ (d) Mean = Mode = Median

35. If a pair of linear equations $a_1x + b_1y + c_1 = 0$ and $a_2x + b_2y + c_2 = 0$ represents coincident lines, then, correct relation among the following is,

- (a) $\frac{a_1}{a_2} \neq \frac{b_1}{b_2}$ (b) $\frac{a_1}{a_2} = \frac{b_1}{b_2} \neq \frac{c_1}{c_2}$
(c) $\frac{a_1}{a_2} = \frac{b_1}{b_2} = \frac{c_1}{c_2}$ (d) $\frac{b_1}{b_2} = \frac{a_2}{b_2}$

SCIENCE

1. The major cause of environmental pollution is the use of _____

- (a) hydrogen as fuel (b) biomass energy
(c) ocean energy (d) fossil fuels

2. Out of the following pairs of compounds, the unsaturated compounds are

- (a) C_2H_6 and C_4H_6 (b) C_6H_{12} and C_5H_{12}
(c) C_4H_6 and C_6H_{12} (d) C_2H_6 and C_4H_{10}

3. Significant role of stomata in transportation is to

- (a) Create upward pressure (b) Absorb carbon-di-oxide
(c) Release oxygen (d) Perform transpiration continuously

4. The wavelengths corresponding to violet, yellow and red lights are respectively.

- (a) $\lambda_v < \lambda_y < \lambda_r$ (b) $\lambda_y < \lambda_v < \lambda_r$

- (c) $\lambda_v > \lambda_y > \lambda_r$ (d) $\lambda_y < \lambda_r < \lambda_v$



b-fet CRESCENT ITI (GOVT.AIDED)

* # 5, Near Metro Pillar 58, Ilyasnagar, Sarakki Gate, Kanakapura Main Road, Bangalore-560 078.
* Jigani Link Road, Near SFO, KIADB, Bommasandra, 4th Phase, Bangalore-560 099.

Fees Rs. 2,400/- only for Govt. Quota Seats

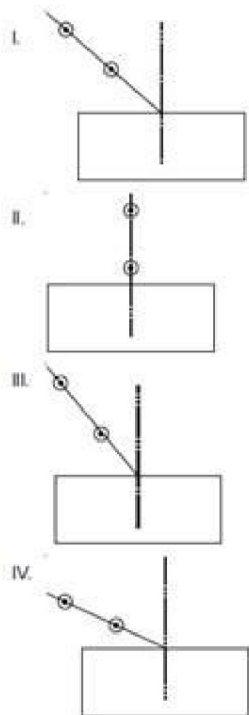
**Ph: 92424 84476
94482 26652**



Skill India
कौशल भारत - कुशल भारत

5. Select from the following the best set-up for

tracing the path of a ray of light through a rectangular glass slab: [2013]



- (a) I (b) II
(c) III (d) IV

6. The size of the pupil of the eye is adjusted by

- (a) Cornea (b) ciliary muscles
(c) Optic nerve (d) Iris

7. The free electrons of a metal are free to

- (a) move on the surface only (b) are free to escape through the surface
(c) are free to fall into the nuclei (d) are free to move anywhere in the metal

8. The work done in moving a unit charge across two points in an electric circuit is a measure of

- (a) Current (b) potential difference
(c) resistance (d) power

9. The nature of eye lens is

- (a) Always convex (b) Always concave
(c) Some time convex and other times concave (d) Cannot say

10. Q. 2. The most abundant metal in earth's crust is:

- (a) (a) Cu (b) (b) Al
(c) (c) O₂ (d) (d) Fe

11. The human eye can focus objects at different distances by adjusting the focal length of the eye-lens. This is due to

- (a) Presbyopia (b) Accommodation
(c) Near sightedness (d) Far sightedness

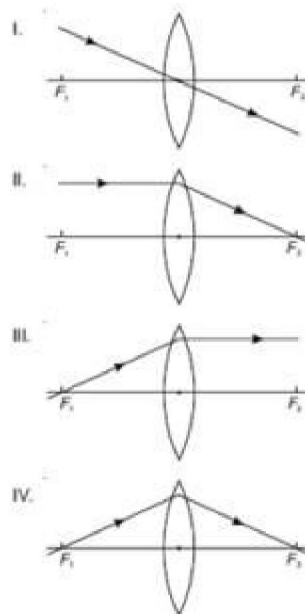
12. The internal (cellular) energy reserve in autotrophs is Glycogen

- (a) glycogen (b) Protein
(c) Starch (d) Fatty acids.

13. In a neuron, conversion of electrical signal to a chemical signal occurs at/in

- (a) Cell body (b) Axonal end
(c) Dendritic end (d) Axon.

14. Study the following ray diagrams : [2013]



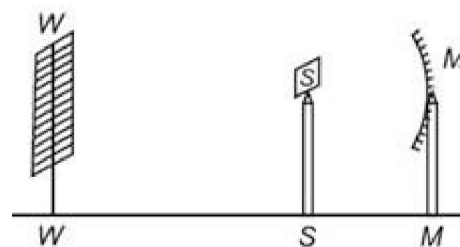
The diagrams showing the correct path of the

ray after passing through the lens are

- (a) II and III only (b) I and II only
(c) II and III, I (d) I, II and IV

15. If one hydrogen atom of propane is replaced by a ketone group, than the molecular formula of the compound obtained is
- (a) C_4H_8O (b) C_3H_8O
(c) C_3H_6O (d) $C_4H_{10}O$
16. Hard water required for an experiment is not available in a school laboratory. However, following salts are available in the laboratory. Select the salts which may be dissolved in water to make it hard for the experimen
- (a) Calcium Sulphate (b) Sodium Sulphate
(c) Calcium Chloride (d) Potassium Sulphate
- Magnesium Chloride Sodium Hydrogen Carbonate
17. In Mendeleev's Periodic Table, gaps were left for the elements to be discovered later. Which of the following elements found a place in the periodic table later
- (a) Germanium (b) Chlorine
(c) Oxygen (d) Silicon
18. The group of compounds which are in homologous series is,
- (a) CH_4, C_2H_4, C_2H_2 (b) $CH_4, CH_3OH, HCHO$
(c) CH_4, C_2H_6, C_3H_8 (d) $C_2H_2, C_3H_6, C_4H_{10}$
19. A negative charge released from a point A moves along the line AB. The potential at A is 15 v. and it varies uniformly along AB. The potential at B.
- (a) May be 10 V (b) may be 15 V
(c) may be 20 V (d) must be 15 V
20. Main constituent of a biogas is
- (a) Methane (b) Butane
(c) Carbon dioxide (d) Puuopane
21. Urea produced in
- (a) Pancreas (b) Kidney
(c) Lungs (d) Skin
22. Which among the following is a correct sequence of organs in the human female reproductive system?
- (a) Ovary-fallopian tube - uterus-cervix-vagina (b) Ovary-uterus-fallopiantube-cervix-vagina
(c) Uterus-ovary-fallopiantube-cervix-vagina (d) Ovary-fallopiantube-cervix-uterus-vagina

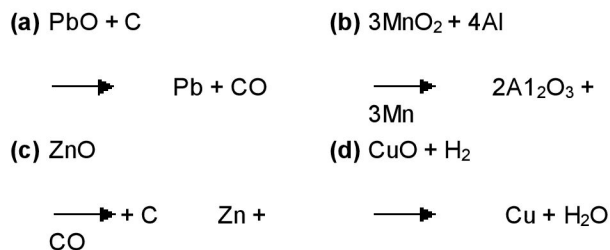
23. A student obtains a sharp image of the distant window (W) of the school laboratory on the screen (S) using the given concave mirror (M) to determine its focal length. Which of the following distances should he measure to get the focal length of the mirror? [2015]



- (a) MW (B) MS (b) MS
(c) SW (D) MW – MS
- (c) SW (d) MW-S
24. Which of the following represents the correct increasing order of unsaturation ?
- (a) Alkanes, alkenes, alkynes (b) Alkanes, alkynes, alkenes
(c) Alkenes, alkynes, alkanes (d) Alkynes, alkanes, alkenest
25. A boy is standing in front of and close to a special mirror. He finds the image of his head bigger than normal, the middle part of his body of the same size, and his legs smaller than normal. The special mirror is made up of three types of mirrors in the following order from top downwards :
- (a) aconvex, plane, concave (b) plane, convex, concave
(c) concave, plane, convex (d) convex, concave, plane
26. Which of these is a plant hormone?
- (a) Insulin (b) Thyroxin
(c) Estrogen (d) cytokinin



27. Reactive metals are good reducing agents. The most suitable example related to this is



28. Bacteria present in human intestine

- (a) Colliform (b) Rhzobium
(c) Azetobacter (d) clostridium

29. Observe the following chemical equations and identify the correct statement.



- (a) (a) Copper is more reactive than Iron and Silver. (b) (b) Iron is less reactive than Copper and Silver.
(c) (c) Copper is more reactive than Silver but less than Iron. (d) (d) Silver is more reactive than Copper and Iron.

30. Food cans are coated with tin and not with zinc because

- (a) Zinc is costlier (b) Zinc has higher melting point than tin
(c) Zinc is more reactive than tin (d) Zinc is less reactive than tin

31. Though a woman can see the distant objects clearly, she cannot see the nearby objects clearly. She is suffering from the defect of vision called

- (a) Long-sight (b) Short-sight
(c) Hind-sight (d) Mid-sight

32. The hormone that controls the rate of respiration in the human body is

- (a) Thyroxin (b) Progesterone
(c) adrenaline (d) insulin

33. The pH value of mouth is

- (a) 5.0 (b) 5.5
(c) 5.3 (d) 5.1

34. The image of a distant object is obtained on a screen by using a concave mirror. The focal length of the mirror is measured by the distance between

- (a) the object and the mirror (b) the object and the screen
(c) the mirror and the screen (d) the mirror and the screen as well as that between the object and the screen.

35. On moving from left to right in a period in the periodic table, the size of the atom.

- (a) Increases (b) Decreases
(c) Does not change appreciably (d) First decreases and then increases.

36. Posture and balance of the body is controlled by

- (a) Cerebrum (b) Cerebellum
(c) Medulla (d) Pons.

37. The famous movement that was started by women of Advani village in Tehri-Garhwal against felling of trees

- (a) Chipko movement (b) Appiko movement
(c) Bishnoi movement (d) Bahuguna movement,

38. If one hydrogen atom of propane is replaced by a ketone group, then the molecular formula of the compound obtained is

- (a) $\text{C}_4\text{H}_8\text{O}$ (b) $\text{C}_3\text{H}_8\text{O}$
(c) $\text{C}_3\text{H}_6\text{O}$ (d) $\text{C}_4\text{H}_{10}\text{O}$

39. Dolomite is

- (a) a) an acid salt (b) b) a mixed salt
(c) c) a normal salt (d) d) a double salt

40. A strong bar magnet is placed vertically above a horizontal wooden board. The magnetic lines

of force will be:

- (a) only in horizontal plane around the magnet. (b) only in vertical plane around the magnet.
(c) in horizontal as well as in vertical planes around the magnet. (d) in all the planes around the magnet.



b-fet CRESCENT ITI (GOVT.AIDED)

Fees Rs. 2,400/- only for Govt. Quota Seats

★ # 5, Near Metro Pillar 58, Ilyasnagar, Sarakki Gate, Kanakapura Main Road, Bangalore-560 078.
★ Jigani Link Road, Near SFO, KIADB, Bommasandra, 4th Phase, Bangalore-560 099.

**Ph: 92424 84476
94482 26652**



Skill India
कौशल भारत - कुशल भारत

41. Dinosaurs were ancient reptiles and many of them had also characters of birds. From these fossils evidences, we conclude that

- (a) Reptiles have evolved from birds. (b) There exists no revolutionary relationship between reptiles and birds.
(c) Birds have evolved from reptiles. (d) There is no evolutionary connection between reptiles and birds.

42. The gap between two neurons is called a -

- (a) Dendrite (b) Synapse
(c) Axon (d) Impulse.

43. In an experiment to trace the path of a ray of

light through a glass prism for different values of angle of incidence a student would find that the emergent ray : [2013]

- (a) Is parallel to the incident ray (b) Perpendicular to the incident ray
(c) Is parallel to the refracted ray (d) Bends at an angle to the direction of the incident ray

44. An aqueous solution turns red litmus solution blue. Excess addition of which of the following solution would reverse the change?

- (a) a) Baking powder (b) b) lime
(c) c) Ammonium hydroxide solution (d) d) Hydrochloric acid

45. Moon is a

- (a) luminous object (b) non-luminous object
(c) sometimes luminous and sometimes non-luminous (d) cannot say

46. Myopia is corrected by

- (a) Concave lens (b) Convex lens
(c) Concave mirror (d) Convex mirror

47. Carbon forms a large number of organic compounds due to

- (a) catenation (b) tendency to form multiple bonds
(c) phenomenon of isomerism (d) all the three above

48. A covalent bond is formed by

- (a) Complete transfer of electrons (b) one sided sharing of electrons
(c) mutual sharing of electrons (d) any of the three above.

49. The blood leaving the tissues becomes richer in

- Carbon (b) Water
(a) dioxide
(c) Haemoglobin (d) Oxygen.

50. A student obtained a sharp image of the grills of

a window on a screen using a concave mirror.

His teacher remarked that for getting better results a well lit distance object (preferably the Sun) should be focused on the screen. What should be done for this purpose?

[2012, 2013]

- (a) Move the screen and the mirror towards the object (b) Move the screen and the mirror away from the object
(c) Move the screen slightly away from the mirror (d) Move the mirror slightly towards the screen

51. The defect of vision in which the eye-leas of a person gets progressively cloudy resulting in blurred vision is called

- (a) Myopia (b) Presbyopia
(c) Colourblindness (d) cataract

52. A response that does not happen in plants due to their growth is

- (a) Bending of shoot towards light (b) Penetration of roots in deep soil
(c) Folding of leaves when touched (d) Climbing tendrils of a creeper

53. Light travelling from a denser medium to a rarer medium along a normal to the boundary:

- (a) is refracted towards the normal (b) goes along the boundary
(c) is refracted away from the normal (d) is not refracted



b₋fet CRESCENT ITI (GOVT.AIDED)

Fees Rs. 2,400/- only for Govt. Quota Seats

★ # 5, Near Metro Pillar 58, Ilyasnagar, Sarakki Gate, Kanakapura Main Road, Bangalore-560 078.
★ Jigani Link Road, Near SFO, KIADB, Bommasandra, 4th Phase, Bangalore-560 099.

**Ph: 92424 84476
94482 26652**



Skill India
कौशल भारत - कुशल भारत

54. A student takes about 4 ml of distilled water in four test tubes marked P, Q, R and S. He then dissolves in each test tube an equal amount of one salt in one test tube, namely sodium sulphate in P, potassium sulphate in Q, calcium sulphate in R and magnesium sulphate in S. After that he adds an equal amount of soap solution in each test tube. On shaking each of these test tubes well, he observes a good amount of lather (foam) in the test tube marked

- (a) P and Q (b) Q and R
(c) P, Q and S (d) P, R and S

55. Solutions A, B, C and D have pH 3, 4, 6 and 8. The solution with highest acidic strength is

- (a) a) A (b) b) B
(c) c) C (d) d) D

56. If one hydrogen atom of propane is replaced by a ketone group, then the molecular formula of the compound obtained is

- (a) C_4H_8O (b) C_3H_8O
(c) C_3H_6O (d) $C_4H_{10}O$

SOCIAL STUDIES

1. An assembly of the following upholds struggle for human rights?

- (a) Mob (b) riot
(c) propaganda (d) Public opinion

2. The first enter the subsidiary alliance in India.

- (a) Birar (b) Poona
(c) Awadh (d) Hyderabad

3. The Viceroy who implemented the Bengal division was _____

- (a) Lord Cornwallis (b) Dalhousie
(c) Lord Curzon (d) Robert Clive

4. Teleshopping means

- (a) Trading from home itself (b) Trading at International level
(c) Domestic Trade (d) Retail trading

5. Raja Ram Mohan Roy started a periodical called

- (a) Mangaluru samachara (b) Samvada kaumudi
(c) Young Bengal (d) Young India

6. Protection of children from Sexual Offences Act is brought into effect on

- (a) June 19, 2012 (b) July 19, 2016
(c) July 31, 1948 (d) June 19, 2016

7. The right which a person acquires by birth are called

- (a) Fundamental rights (b) Natural rights
(c) Human rights (d) Civil rights

8. According to Karl Marx division of labour leads to

- (a) Skilled workers (b) Less skilled workers
(c) More skilled workers (d) Only workers

9. Maratha paper was published by _____.

- (a) Jawaharlal Nehru (b) Rasbihari Bose
(c) Balgangadhar Tilak (d) V.D. Savarkar

10. The tropical deciduous forests are found in annual rainfall is .

- (a) 10 – 50 cm (b) 100-200cm
(c) 10-30cm (d) 200-250cm

11. The founder of Apollo hospital

- (a) Narayanmurthy (b) Naresh Goel
(c) Prathap C. Reddy (d) Dheerubhai Ambani

12. The central bank of India is

- (a) SBI (b) SBM
(c) ICICI (d) RBI

13. The third Anglo Mysore war was ended by the treaty of

- (a) Madras (b) Mangalore
(c) Srirangapatana (d) Salbai

14. The kosi project is constructed across the river

- (a) mahanadi (b) sutlej
(c) Rihand (d) kosi

15. The premier of china who signed panchasheela Principles was

- (a) Sun-Yat-sen (b) Chaing Kai-shek
(c) Chou En-Lai (d) Mao Tse Tung

16. The dictator of Italy was

- (a) Lenin (b) Stalin
(c) Hitler (d) Mussolin

17. The queen of England passed a declaration in

- (a) 1857 (b) 1856
(c) 1856 (d) 1858



b-fet CRESCENT ITI (GOVT.AIDED)

* # 5, Near Metro Pillar 58, Ilyasnagar, Sarakki Gate, Kanakapura Main Road, Bangalore-560 078.
* Jigani Link Road, Near SFO, KIADB, Bommasandra, 4th Phase, Bangalore-560 099.

Fees Rs. 2,400/- only for Govt. Quota Seats

**Ph: 92424 84476
94482 26652**



18. At present in India we have nationalized banks in number of
- (a) 19 (b) 14
(c) 20 (d) 21
19. The conference of Asian countries held in 1955 in.
- (a) Delhi (b) Bandung
(c) Lahore (d) Shimla
20. Rice crops requires annual rainfall of
- (a) 100-200cm (b) 10-50cm
(c) 60-70cm (d) 80-90 cm
21. Narayanapura dam is constructed across the river
- (a) Kaveri (b) Krishna
(c) kosi (d) Mahanadi
22. The highest peak in the world is
- (a) K² (b) Mt. Everest
(c) Kachanjunga (d) Nandadevi
23. The law prohibiting female feticide was implemented in the year
- (a) 2004 (b) 1994
(c) 2014 (d) 1904
24. The standard of living is measured with the help of
- (a) National Income (b) Per capita Income
(c) Human development index (d) Income indicator
25. The mountains which are also called as Himadri
- (a) The greater Himalayas (b) The lesser Himalayas
(c) Deccan plateau (d) Siwaliks
26. The century is called as the century of political problems
- (a) 18th (b) 19th
(c) 16th (d) 17th
27. The reason to create 'Separate Electorate college' in 1909 was to
- (a) Provide separate representation for Muslims (b) Create separate constituency of Europeans
(c) Provide separate representation for Sikhs (d) Reserve some seats for Christians
28. The Eastern slopes of western Ghats do not receive rain as much as western slopes because they
- (a) Lie in southern part (b) Lie in rain shadow region
(c) Receive more snowfall (d) Have thick forests
29. India's sex ratio in 2011 is
- (a) 1000:946 (b) 1000:945
(c) 1000:1094 (d) 1000:900



b-fet CRESCENT ITI (GOVT.AIDED)

Fees Rs. 2,400/- only for Govt. Quota Seats

★ # 5, Near Metro Pillar 58, Ilyasnagar, Sarakki Gate, Kanakapura Main Road, Bangalore-560 078.
★ Jigani Link Road, Near SFO, KIADB, Bommasandra, 4th Phase, Bangalore-560 099.

**Ph: 92424 84476
94482 26652**

